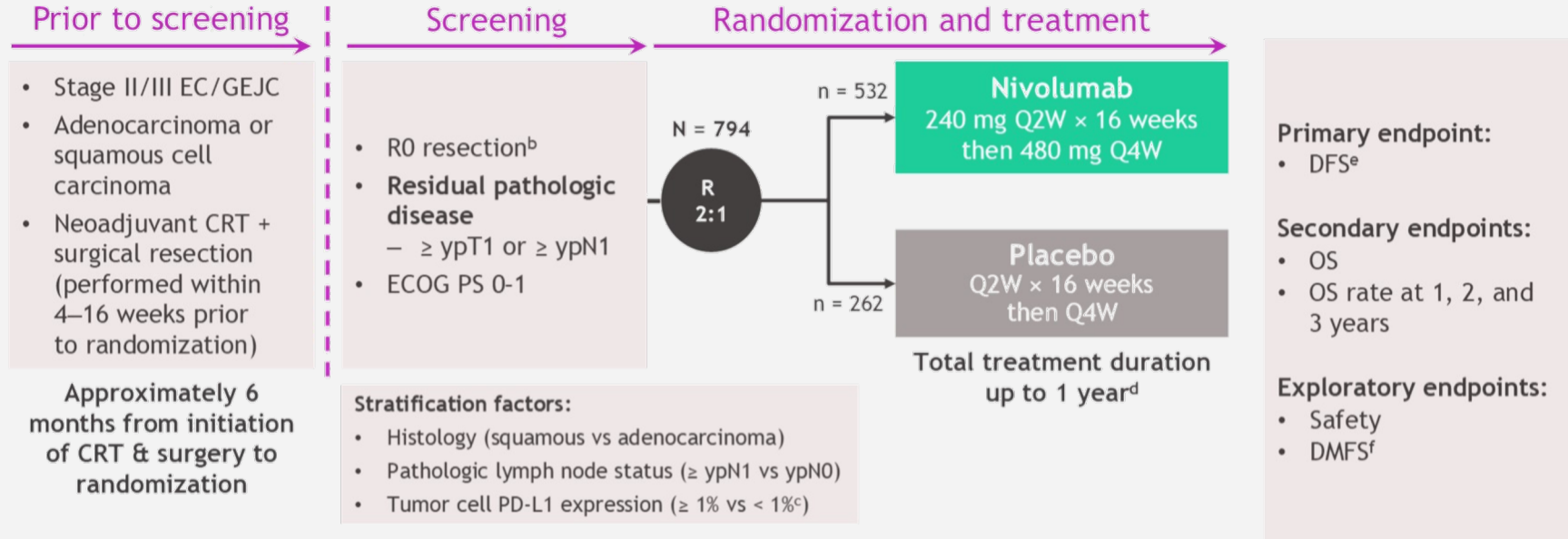


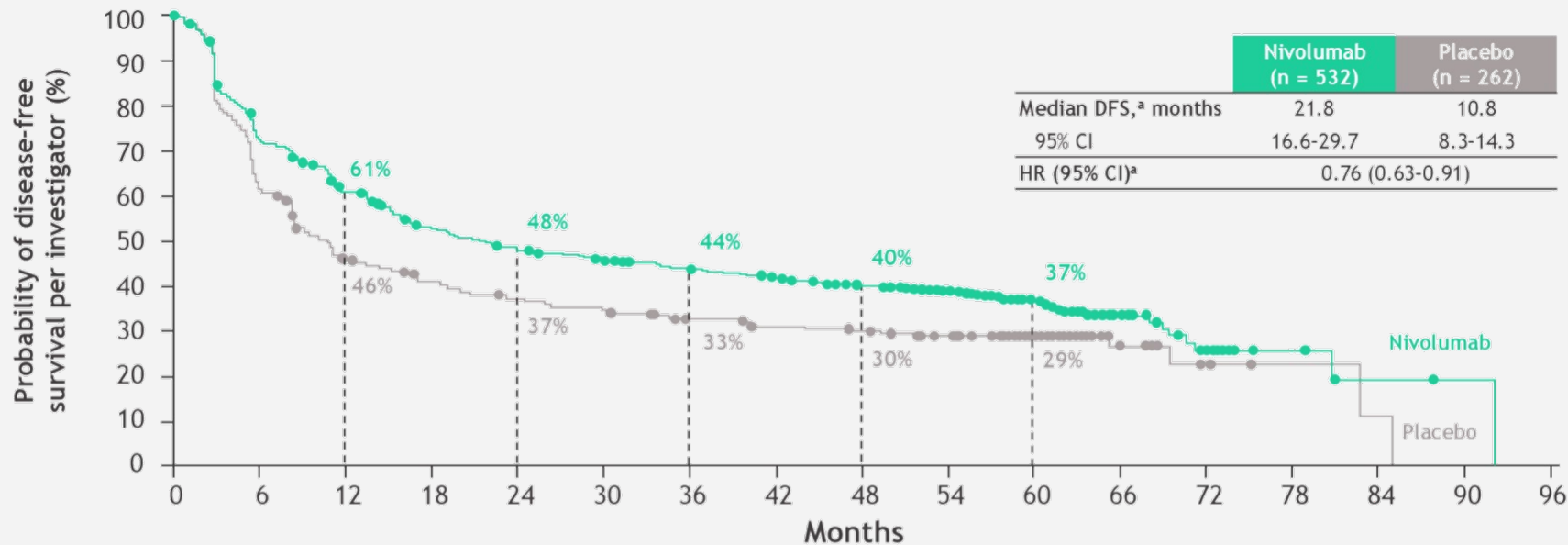
# **Cáncer esofágico o de la unión gastroesofágica localizado**

# CheckMate 577

# Nivolumab en CE/UGE resecable



# Eficacia



No. at risk

Nivolumab

Placebo

532	375	308	259	234	220	208	196	180	165	97	29	15	7	2	1	0
262	159	115	99	89	84	74	68	65	58	39	10	4	2	1	0	0

# Seguridad

All treated patients, <sup>a</sup> n (%)	Nivolumab (n = 532)		Placebo (n = 260)	
	Any grade	Grade 3/4	Any grade	Grade 3/4
Any AE <sup>b,c</sup>	514 (97)	192 (36)	242 (93)	89 (34)
Serious AEs <sup>c</sup>	160 (30)	112 (21)	81 (31)	58 (22)
AEs leading to discontinuation <sup>d</sup>	72 (14)	41 (8)	23 (9)	18 (7)
Any TRAE <sup>b</sup>	379 (71)	75 (14)	124 (48)	17 (7)
Serious TRAEs	41 (8)	31 (6)	6 (2)	3 (1)
TRAEs leading to discontinuation	48 (9)	26 (5)	8 (3)	7 (3)
Treatment-related deaths <sup>e</sup>	0		0	
TRAEs reported in ≥ 10% of patients				
Fatigue	92 (17)	5 (< 1)	30 (12)	2 (< 1)
Diarrhea	87 (16)	2 (< 1)	40 (15)	2 (< 1)
Pruritus	53 (10)	2 (< 1)	9 (3)	0
Rash	51 (10)	4 (< 1)	10 (4)	1 (< 1)

# Discusión

